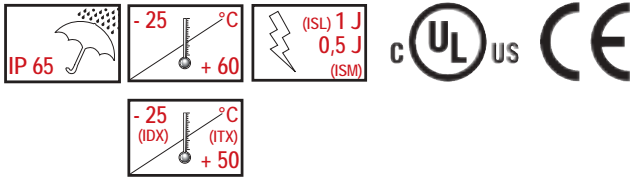
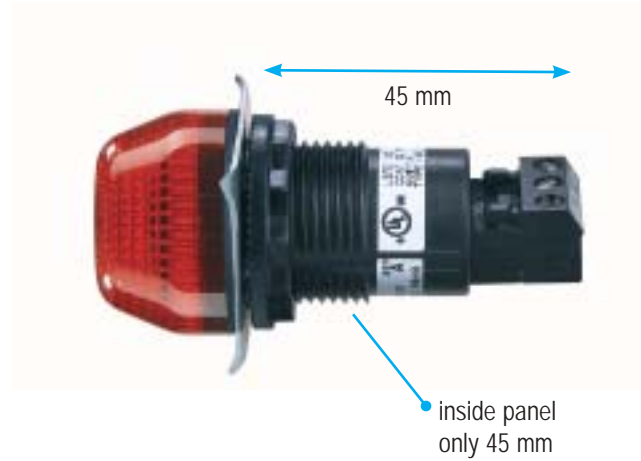


# M22 Panel Mount Beacons „I“

LED Steady-/Flashing beacon IBL-IBM-IBS  
 LED Multicolour beacon IDL-IDM-IDS / ITL-ITM-ITS  
 Strobe beacon ISL-ISM-ISS

## Features

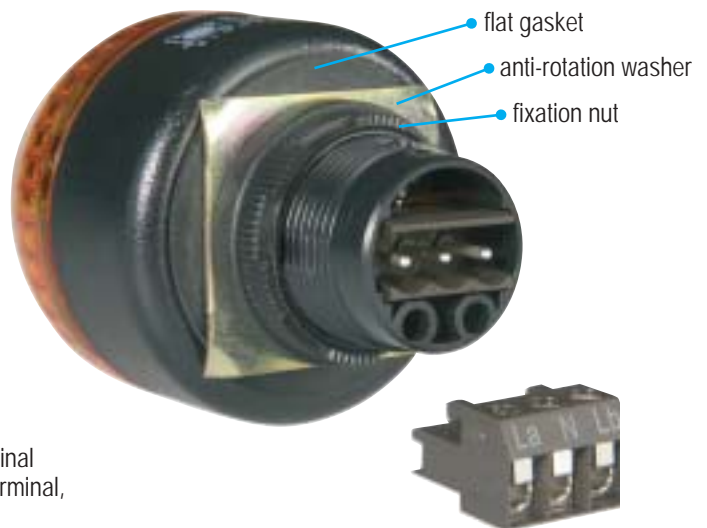
- versatile usable panel mount beacon series for mounting in Ø 22mm bore holes
- 3 sizes Ø 65 – 45 – 30 mm
- Models:
  - IBL-IBM-IBS LED steady-/flashing beacons
  - ISL-ISM-ISS strobe beacons
  - IDL-IDM-IDS LED multicolour beacons – whole lens with each 1 colour visible
  - ITL-ITM-ITS LED multicolour beacons – 2 colours visible – separated colour areas
- selection of steady-/flashing function resp. desired colour via terminal
- maintenance free – long lifetime
- PLC fit (leakage/inrush current)
- particular lens pattern for optimum light dispersion
- adapter for 30,5 mm bore holes



housing and lens made of impact resistant polycarbonate, grey or black



steady-/flashing light and colour selectable via terminal connection (easy electrical connection on plug in terminal, comfortable mounting onto panel mount beacon).





### LED STEADY-/FLASHING BEACONS



IBL  
Ø 65 mm



IBM  
Ø 45 mm



IBS  
Ø 30 mm

### STROBE BEACONS in built-in condition



ISL  
Ø 65 mm



ISM  
Ø 45 mm



ISS  
Ø 30 mm

#### LED Steady-/Flashing Beacons

Light selection

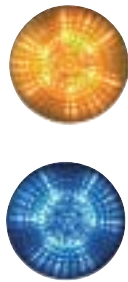
| La | N | Lb |                |                 |
|----|---|----|----------------|-----------------|
| X  | X |    | flashing light | IBL – IBM – IBS |
| X  | X | X  | steady light   | IBL – IBM – IBS |



### LED MULTICOLOUR BEACONS 1 of 2 colours visible (whole lens illuminated)



IDL  
Ø 65 mm

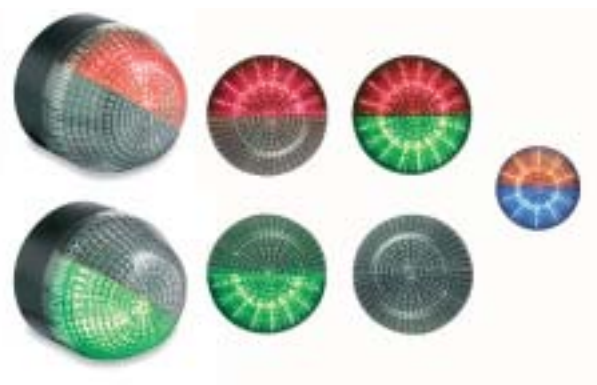


IDM  
Ø 45 mm



IDS  
Ø 30 mm

### LED MULTICOLOUR BEACONS 2 separate colours visible (half lens illuminated)



ITL  
Ø 65 mm

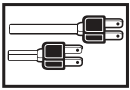
ITM  
Ø 45 mm

ITS  
Ø 30 mm

#### LED Multicolour Beacons

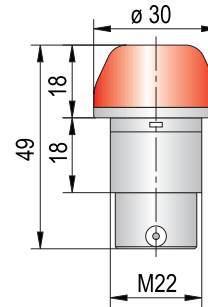
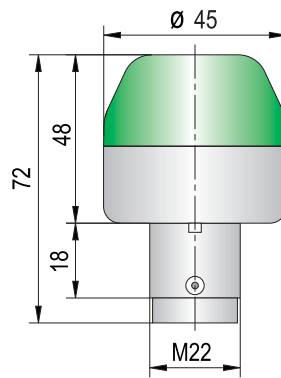
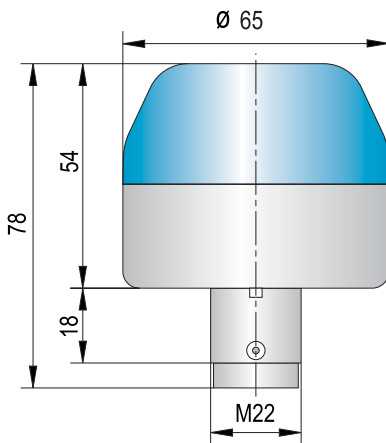
Colour selection

| La | N | Lb |                       |                                    |
|----|---|----|-----------------------|------------------------------------|
| X  | X |    | steady light Colour 1 | IDL – IDM – IDS<br>ITL – ITM – ITS |
| X  | X |    | steady light Colour 2 | IDL – IDM – IDS<br>ITL – ITM – ITS |

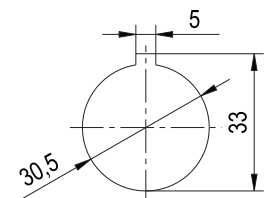
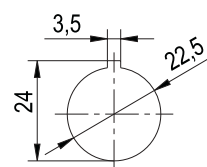
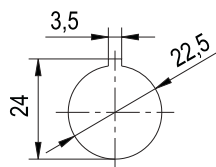
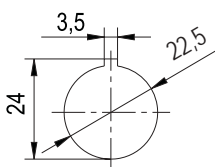


## Technical data

| Type                        | IBL   | IBM | IBS | IDL   | IDM | IDS | ITL  | ITM | ITS | ISL   | ISM   | ISS          |
|-----------------------------|---|-----|-----|---|-----|-----|--|-----|-----|---|-------|--------------|
| Size Ø mm                   | 65  | 45  | 30  | 65  | 45  | 30  | 65   | 45  | 30  | 65  | 45    | 30           |
| Housing, Colour             | polycarbonate, grey or black                          |     |     |   |     |     |  |     |     |   |       |              |
| Lens, Colour                | polycarbonate, amber, red, clear, blue, green, yellow |     |     | polycarbonate, clear  |     |     | polycarbonate, clear   |     |     | polycarbonate, amber, red, clear, blue, green, yellow |       |              |
| Mounting                    | M22 – for Ø or 30,5mm bore holes (with adapter)       |     |     |   |     |     |  |     |     |   |       |              |
| Light type                  | steady- or flashing light                             |     |     | steady beacon – 2 colours<br>full lens illumination -<br>1 colour visible |     |     | steady beacon –<br>half lens illumination –<br>2 colours visible |     |     | strobe light  |       |              |
| Light source                | LED   |     |     |   |     |     |  |     |     | xenon tube  |       | LED flashing |
| Strobe-/Flashing frequency  | 1 Hz  |     |     |   |     |     |  |     |     | 1,4 Hz  |       |              |
| Strobe energy               |   |     |     |   |     |     |  |     |     | 1 J   | 0,5 J |              |
| Life time<br>(Light source) | ~ 100.000 h   |     |     |   |     |     |  |     |     | min. 10 Mio.<br>flashes                               |       | ~ 100.000 h  |
| Duty cycle factor           | 100 %   |     |     |   |     |     |  |     |     |   |       |              |
| Protection class            | IP 65, UL type 4, 4X, 13                              |     |     |   |     |     |  |     |     |   |       |              |
| Terminals                   | up to 2,5 mm <sup>2</sup>                             |     |     |   |     |     |  |     |     |   |       |              |
| Temperature range           | -25 °C to +60 °C                                      |     |     | -25 °C to +50 °C  |     |     | -25 °C to +50 °C   |     |     | -25 °C to +60 °C                                      |       |              |
| Weight (g)                  | 75  | 55  | 30  | 75  | 55  | 30  | 77   | 56  | 31  | 85  | 65    | 30           |



with Adapter

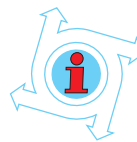




## Order data

| Type                                 | Nominal voltage (V) | Order No.    |               | Nominal current (mA) |
|--------------------------------------|---------------------|--------------|---------------|----------------------|
|                                      |                     | Housing grey | Housing black |                      |
| <b>LED Steady-/ Flashing beacons</b> |                     |              |               |                      |
| IBL                                  | 12 V AC/DC          | 802 10C 404  | 802 50C 404   | 80                   |
|                                      | 24 V AC/DC          | 802 10C 405  | 802 50C 405   | 60                   |
|                                      | 110/120 V AC        | 802 10C 310  | 802 50C 310   | 30                   |
|                                      | 230/240 V AC        | 802 10C 313  | 802 50C 313   | 31                   |
| IBM                                  | 12 V AC/DC          | 801 10C 404  | 801 50C 404   | 62                   |
|                                      | 24 V AC/DC          | 801 10C 405  | 801 50C 405   | 37                   |
|                                      | 110/120 V AC        | 801 10C 310  | 801 50C 310   | 30                   |
|                                      | 230/240 V AC        | 801 10C 313  | 801 50C 313   | 30                   |
| IBS                                  | 12 V AC/DC          | 800 10C 404  | 800 50C 404   | 45                   |
|                                      | 24 V AC/DC          | 800 10C 405  | 800 50C 405   | 26                   |
|                                      | 110/120 V AC        | 800 10C 310  | 800 50C 310   | 18                   |
|                                      | 230/240 V AC        | 800 10C 313  | 800 50C 313   | 19                   |
| <b>Strobe beacons</b>                |                     |              |               |                      |
| ISL                                  | 12-24 V AC/DC       | 802 11C 405  | 802 51C 405   | 150 (12V: 150)       |
|                                      | 110/120 V AC        | 802 11C 310  | 802 51C 310   | 30                   |
|                                      | 230/240 V AC        | 802 11C 313  | 802 51C 313   | 20                   |
| ISM                                  | 12-24 V AC/DC       | 801 11C 405  | 801 51C 405   | 110 (12V: 110)       |
|                                      | 110/120 V AC        | 801 11C 310  | 801 51C 310   | 20                   |
|                                      | 230/240 V AC        | 801 11C 313  | 801 51C 313   | 12                   |
| ISS                                  | 12 V AC/DC          | 800 11C 404  | 800 51C 404   | 60                   |
|                                      | 24 V AC/DC          | 800 11C 405  | 800 51C 405   | 46                   |
|                                      | 110/120 V AC        | 800 11C 310  | 800 51C 310   | 18                   |
|                                      | 230/240 V AC        | 800 11C 313  | 800 51C 313   | 21                   |

| Type   | Nominal voltage (V) | Order No.    |               | Nominal current (mA) |
|--|---------------------|--------------|---------------|----------------------|
|  |                     | Housing grey | Housing black |                      |
| <b>LED Multicolour beacons - 1 of 2 colours visible</b>          |                     |              |               |                      |
| IDL  | 24 V AC/DC          | 802 2CC 405  | 802 6CC 405   | 71                   |
|  | 110/120 V AC        | 802 2CC 310  | 802 6CC 310   | 61                   |
|  | 230/240 V AC        | 802 2CC 313  | 802 6CC 313   | 61                   |
| IDM  | 24 V AC/DC          | 801 2CC 405  | 801 6CC 405   | 46                   |
|  | 110/120 V AC        | 801 2CC 310  | 801 6CC 310   | 35                   |
|  | 230/240 V AC        | 801 2CC 313  | 801 6CC 313   | 35                   |
| IDS  | 24 V AC/DC          | 800 2CC 405  | 800 6CC 405   | 28                   |
| <b>LED Multicolour beacons - 2 separate colour areas visible</b> |                     |              |               |                      |
| ITL  | 24 V AC/DC          | 802 3CC 405  | 802 7CC 405   | 44                   |
|  | 110/120 V AC        | 802 3CC 310  | 802 7CC 310   | 41                   |
|  | 230/240 V AC        | 802 3CC 313  | 802 7CC 313   | 41                   |
| ITM  | 24 V AC/DC          | 801 3CC 405  | 801 7CC 405   | 39                   |
|  | 110/120 V AC        | 801 3CC 310  | 801 7CC 310   | 35                   |
|  | 230/240 V AC        | 801 3CC 313  | 801 7CC 313   | 34                   |
| ITS  | 24 V AC/DC          | 800 3CC 405  | 800 7CC 405   | 30                   |
| Adapter M30,5  |                     | 812 500 900  |               |                      |



**NOTE**  
for models with separate colour area (ITL-ITM-ITS):

When beacon is correctly mounted (rear orientation notch is on the top position), the first colour code C defines the colour in the upper beacon half and the second colour code C defines the colour in the lower beacon half

**Example:**

model ITM red-green, housing black, 24 V AC/DC

801 7CC 405

801 726 405

red – top  
green – bottom



### Colour code for lens

| Colour code for lens |       | C |        |
|----------------------|-------|---|--------|
| 1                    | amber | 5 | blue   |
| 2                    | red   | 6 | green  |
| 4                    | clear | 7 | yellow |